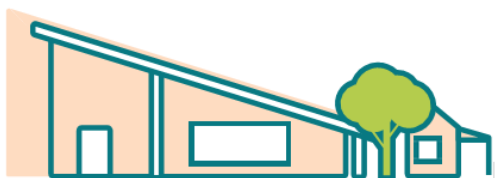




ACHIEVE – COURAGE – COOPERATE – RESPECT



2024 annual report to the Community

Keith Area School

Keith Area School number: 757

Partnership: Tatiara



School principal:

Jacqueline Vandeleur

Date of endorsement:

16/02/2025



Government
of South Australia
Department for Education

Context Statement

Keith Area School caters for students from R-12. At the time of this report, the enrolment in 2024 is 306. Keith Area School is classified as Category 6 on the Department for Education Index of Educational Disadvantage. At the time of this report, the school population includes 6% Aboriginal students, 5% students with disabilities, 1% children/young people in care. Further information about the school is available on the school's website (including its context statement), as well as the My School website.

Data Source: Department for Education data holdings from Mid census captured in AUGUST 2024.

Governing Council Report

Keith Area School during 2024 was a period of stability and continuity. After the evolving phase of 2023, the leadership team was settled. The Governing Council this year comprised of parent representatives, Joe Cook, Susan Morcom, Sarah Martin and Sarah Rayson, along with newly appointed parents, Roisin Schrieber and Nathan Nutt. School student representative was SRC Captain Macy Llewellyn. Mrs Sarah Martin was Governing Council Chair for the school year, supported by Susan Morcom as Deputy Chair and Roisin Schrieber as treasurer.

The 2023 year had a strong focus on completing long held facility projects and saw the completion of the COLA resurface, the secondary play space and continual improvement in the Agricultural studies area. The Agricultural Studies area has continued the momentum garnered from 2023 and the engagement in this space is growing from a student, teacher and community perspective- very pleasing to see in an Agricultural rich, rural environment.

There has been an anecdotal incremental rise in the teachers, staff and students' aptitude for their willingness to learn, strive for development across academia, sporting and cultural influences and create an inclusive and engaged culture. The Governing council focus was to be a continuity of improvement in facilities and curriculum resources, family and community engagement and cultural positive awareness across the school, notwithstanding an oversight of governance, policy and procedure protocol and due diligence. This is reflective in the increased enrolments and retention of students leading into the 2025 year. The strong year 12 results of 2024 are reflective of the engagement and participation of the students, be it through traditional academic pathways or VET programs.

The school is vibrantly and expertly led by Mrs Vandeleur, who adds a wealth of knowledge, energy and colour to the school. The school is well positioned in 2025 with a stable and experienced leadership team, continual focus of facility improvement (with the much-anticipated student led school café) and a positive disposition of the school community in its entirety.

I would like to thank the support of all current and previous governing council representatives in their capacity as parent/student/staff over the past four years of my tenure. For those parent representatives whom their tenure is concluding; Susan Morcom and Sarah Rayson, I thank for their insights and participation for many years, should they wish to not renominate.

2025 and will see another year of growth. For the wider school community, be it students, past and present and the dedicated teaching staff, the environment of Keith Area School is a place to be incredibly proud of. With eager anticipation, I shall look forward to observing and supporting this positive trajectory.

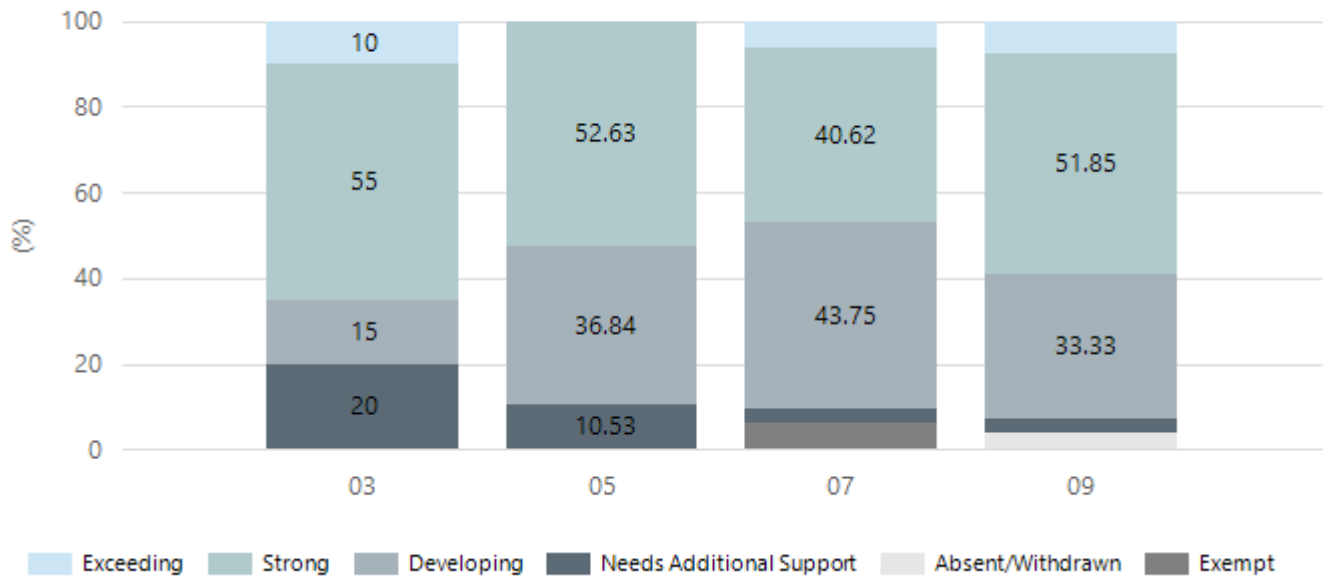
I wish the Keith Area School community the very best of endeavours for 2025

Performance Summary

NAPLAN Proficiency

In 2023 the Australian Curriculum, Assessment and Reporting Authority (ACARA) - a Commonwealth Independent statutory authority - announced changes to NAPLAN performance reporting. The new approach replaces the previous numerical NAPLAN bands and the national minimum standard.

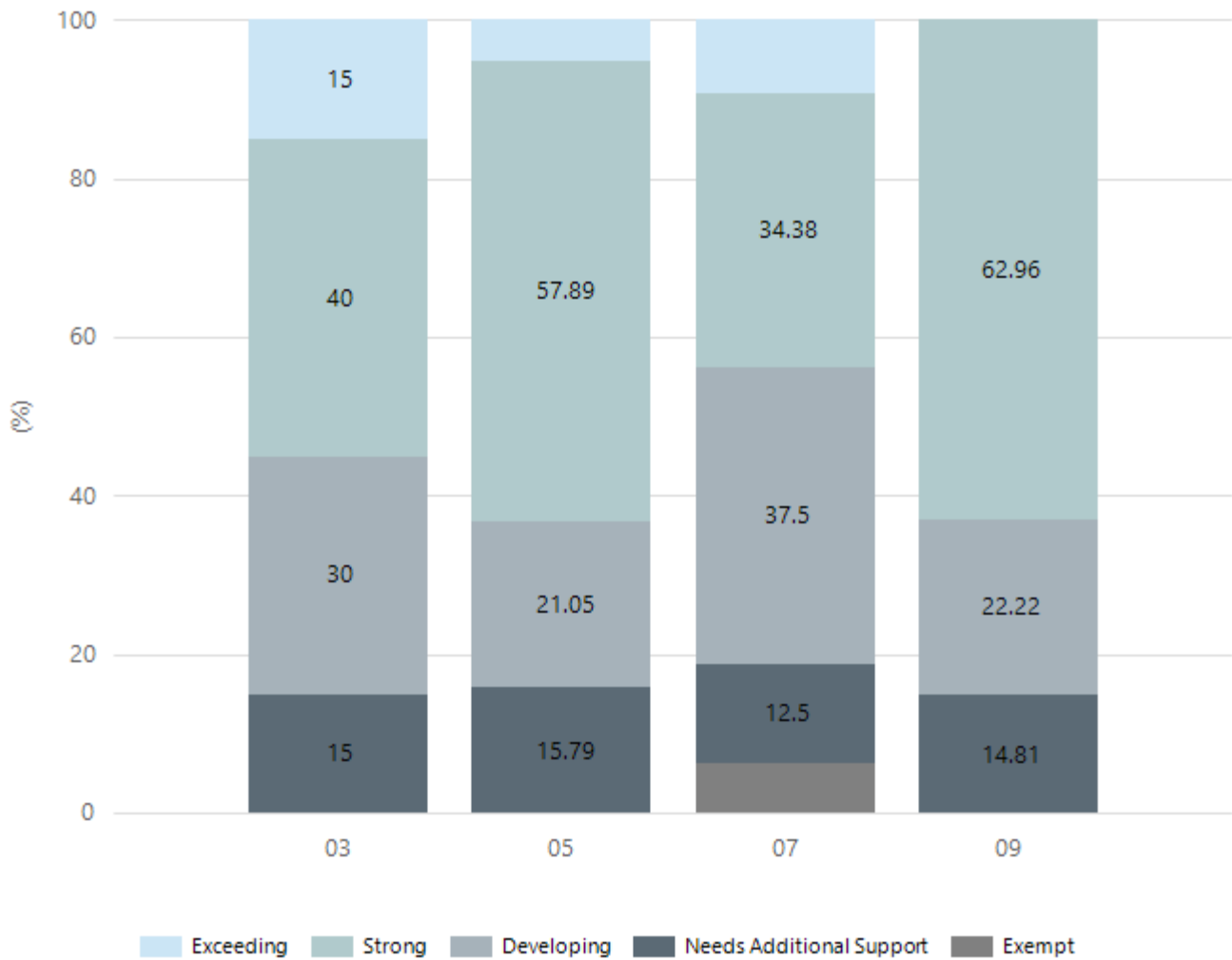
Numeracy



Year Level	03	05	07	09
Exceeding	2		2	2
Strong	11	10	13	14
Developing	3	7	14	9
Needs Additional Support	4	2	1	1
Absent/Withdrawn				1
Exempt			2	
Total	20	19	32	27

Data Source: Department for Education Assessment Data Holdings, 2024. If there are less than 6 students who sat NAPLAN in a school, no information will be shown. If a year level has less than 6 students, that year level will not be shown in NAPLAN results.

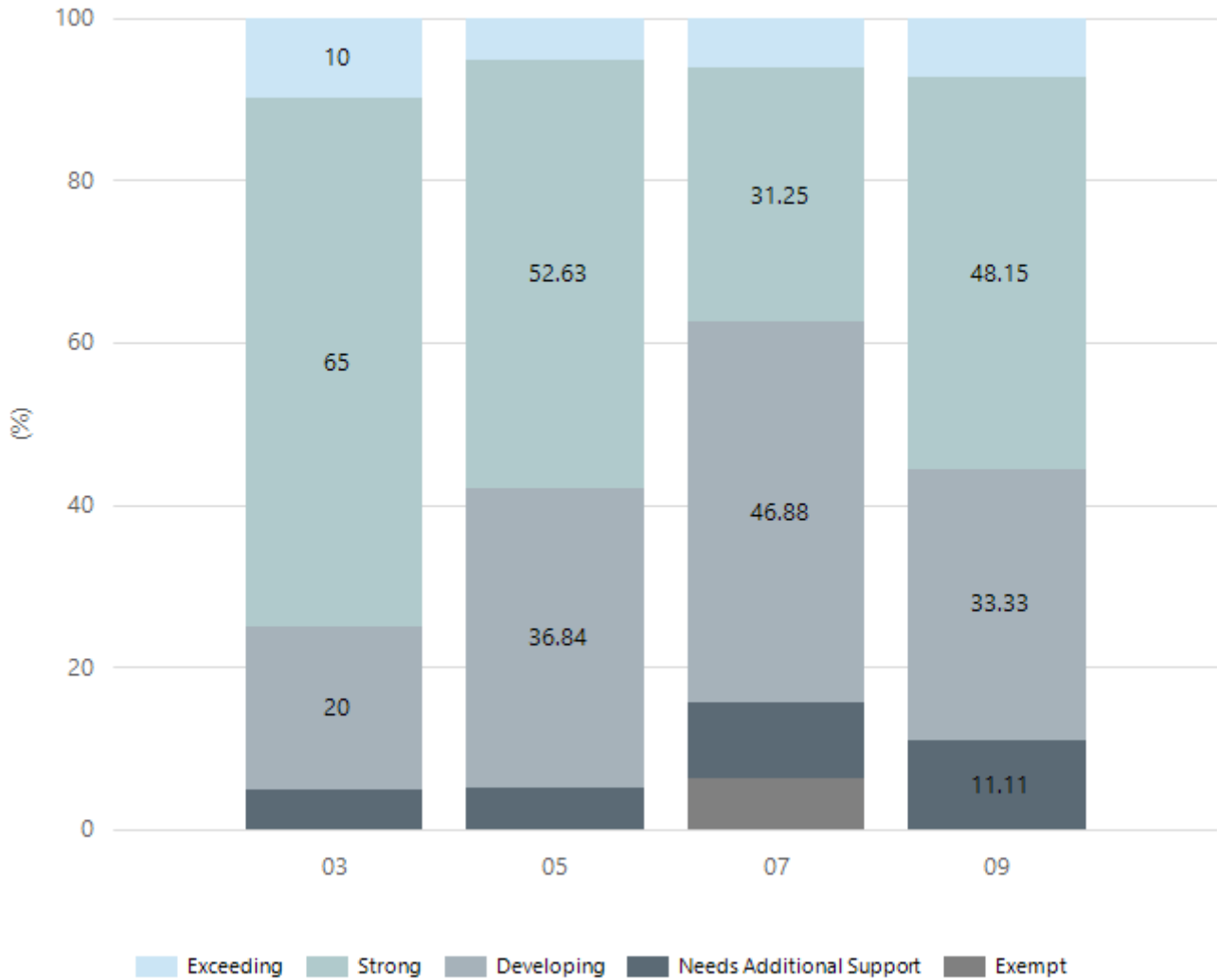
Reading



Year Level	03	05	07	09
Exceeding	3	1	3	
Strong	8	11	11	17
Developing	6	4	12	6
Needs Additional Support	3	3	4	4
Exempt			2	
Total	20	19	32	27

Data Source: Department for Education Assessment Data Holdings, 2024. If there are less than 6 students who sat NAPLAN in a school, no information will be shown. If a year level has less than 6 students, that year level will not be shown in NAPLAN results.

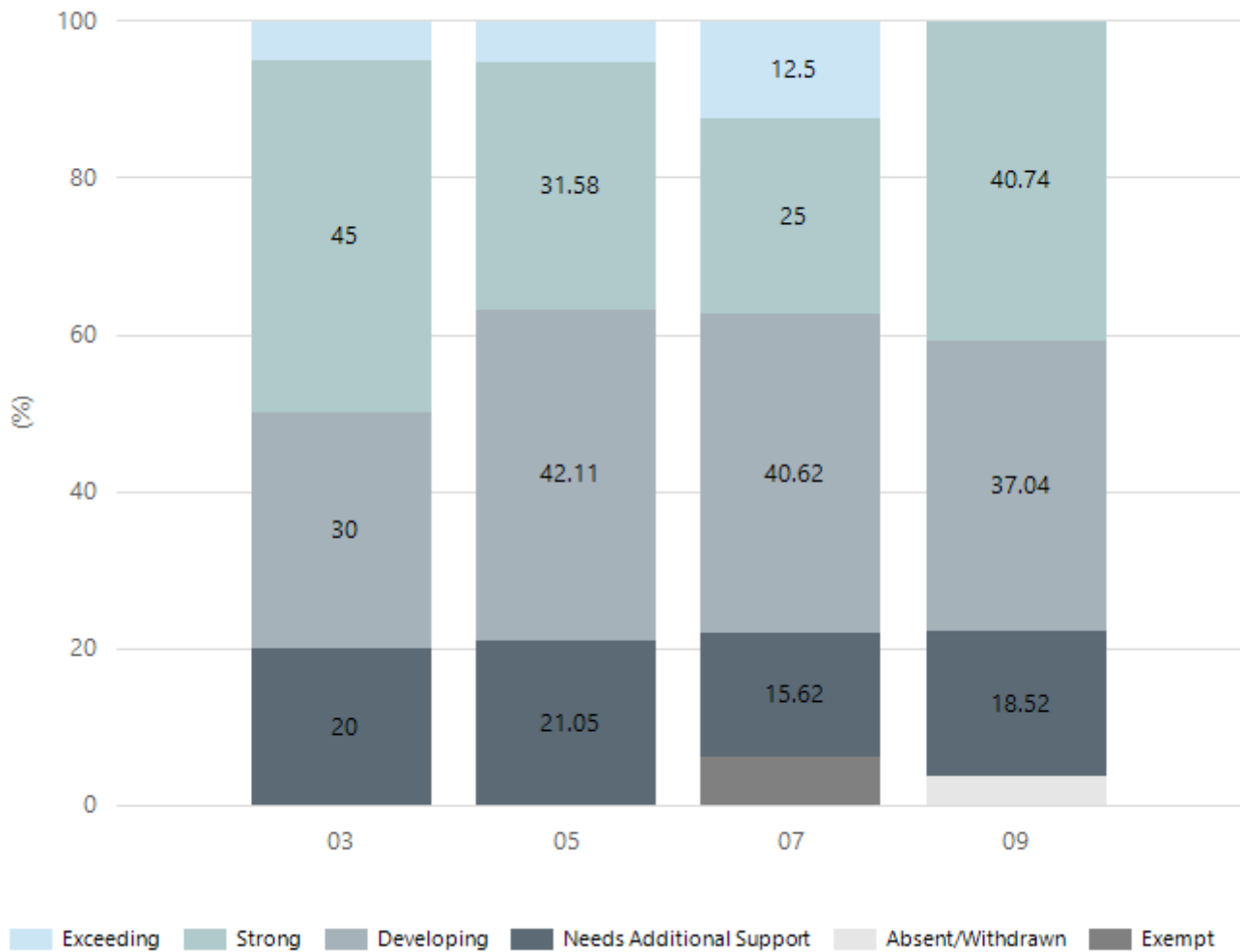
Writing



Year Level	03	05	07	09
Exceeding	2	1	2	2
Strong	13	10	10	13
Developing	4	7	15	9
Needs Additional Support	1	1	3	3
Exempt			2	
Total	20	19	32	27

Data Source: Department for Education Assessment Data Holdings, 2024. If there are less than 6 students who sat NAPLAN in a school, no information will be shown. If a year level has less than 6 students, that year level will not be shown in NAPLAN results.

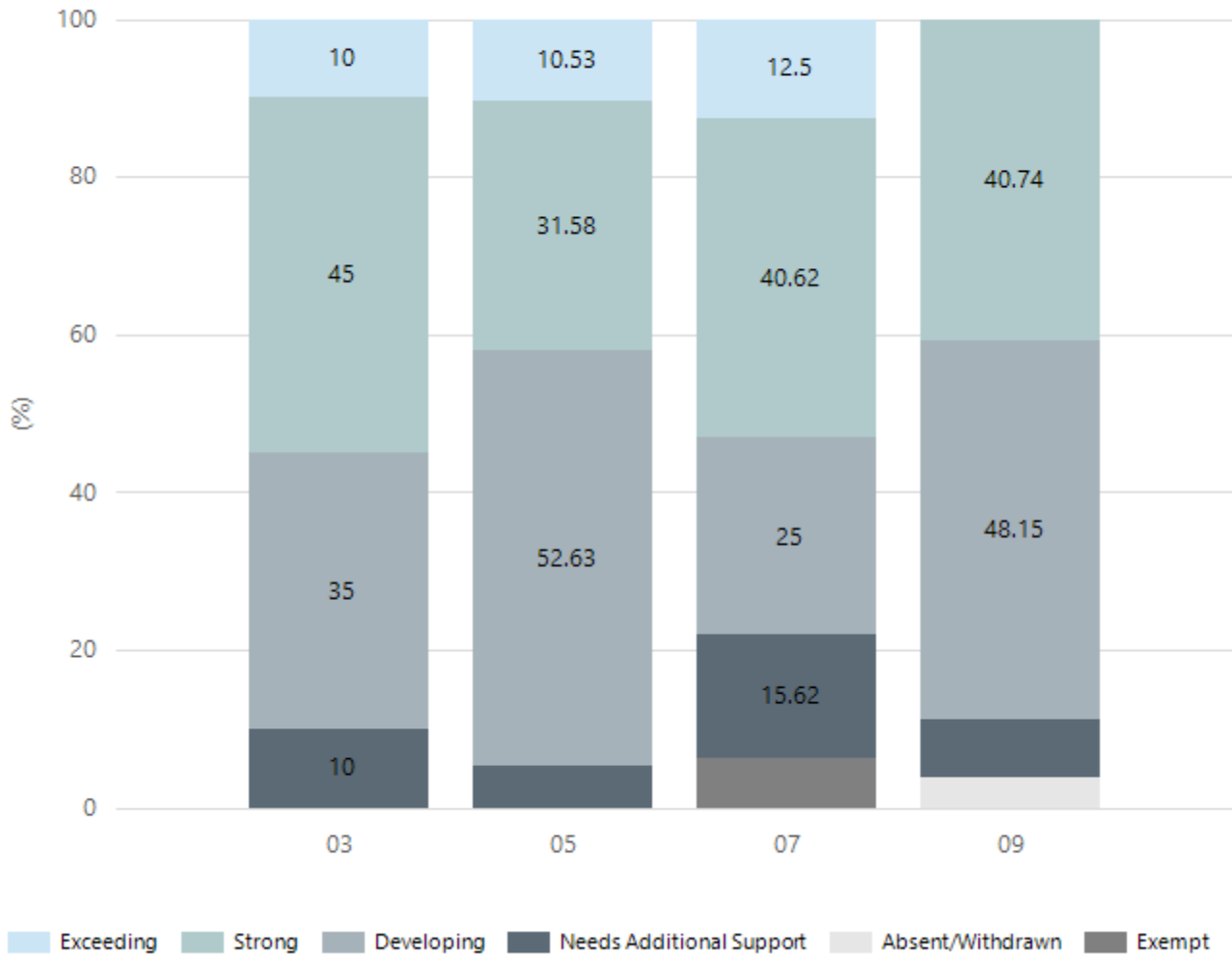
Grammar



Year Level	03	05	07	09
Exceeding	1	1	4	
Strong	9	6	8	11
Developing	6	8	13	10
Needs Additional Support	4	4	5	5
Absent/Withdrawn				1
Exempt			2	
Total	20	19	32	27

Data Source: Department for Education Assessment Data Holdings, 2024. If there are less than 6 students who sat NAPLAN in a school, no information will be shown. If a year level has less than 6 students, that year level will not be shown in NAPLAN results.

Spelling



Year Level	03	05	07	09
Exceeding	2	2	4	
Strong	9	6	13	11
Developing	7	10	8	13
Needs Additional Support	2	1	5	2
Absent/Withdrawn				1
Exempt			2	
Total	20	19	32	27

Data Source: Department for Education Assessment Data Holdings, 2024. If there are less than 6 students who sat NAPLAN in a school, no information will be shown. If a year level has less than 6 students, that year level will not be shown in NAPLAN results.

South Australian Certificate of Education - SACE

SACE Stage 2 Grades - Percentage of grades that are C- or above for attempted SACE subjects (SEA)

2021	2022	2023	2024
97%	100%	100%	100%

Data Source: SACE School Data Reports, as of February 2024 for 2021-2023. 2024 SACE results are School supplied data. When there are less than six students, no data is supplied. Due to rounding of percentages, total results may not add up to 100%.

SACE Stage 2 Grade Distribution

Grade	2021	2022	2023	2024
A	9%	7%	6%	4.41%
A-	7%	13%	12%	4.41%
B+	17%	20%	4%	11.76%
B	22%	13%	20%	16.18%
B-	14%	22%	12%	17.65%
C+	10%	13%	18%	13.24%
C	10%	11%	18%	23.53%
C-	7%		8%	8.82%
D	1%			
D-	1%			

Data Source: SACE School Data Reports, as of February 2024 for 2021-2023. 2024 SACE results are School supplied data. When there are less than six students, no data is supplied. Due to rounding of percentages, total results may not add up to 100%.

SACE Completion - Percentage of completers out of those students who had the potential to complete their SACE in October that year

2021	2022	2023	2024
94%	100%	100%	100%

Data Source: SACE School Data Reports, as of February 2024 for 2021-2023. 2024 SACE results are School supplied data. When there are less than six students, no data is supplied. Due to rounding of percentages, total results may not add up to 100%.

Year 12 Students undertaking Vocational or Trade Training (VET)

	2022	2023	2024
Percentage of Year 12 students undertaking Vocational Training or Trade Training	9	7	9
Percentage of Year 12 students attaining a Year 12 certificate or equivalent VET qualification	5	2	7

Data Source: School supplied data

School Attendance

Year Level	2022	2023	2024
Reception	79.5%	90.3%	90.3%
Year 01	86.6%	91.0%	90.3%
Year 02	89.9%	89.1%	88.9%
Year 03	86.6%	93.7%	87.7%
Year 04	88.2%	90.6%	90.6%
Year 05	87.4%	88.6%	87.3%
Year 06	87.6%	86.8%	91.1%
Year 07	86.3%	87.0%	92.0%
Year 08	86.2%	88.1%	88.8%
Year 09	84.0%	88.3%	88.2%
Year 10	87.1%	84.2%	83.6%
Year 11	85.6%	81.9%	83.4%
Year 12	90.5%	94.1%	76.8%
Secondary Other	100.0%		
Total	86.7%	88.4%	88.5%

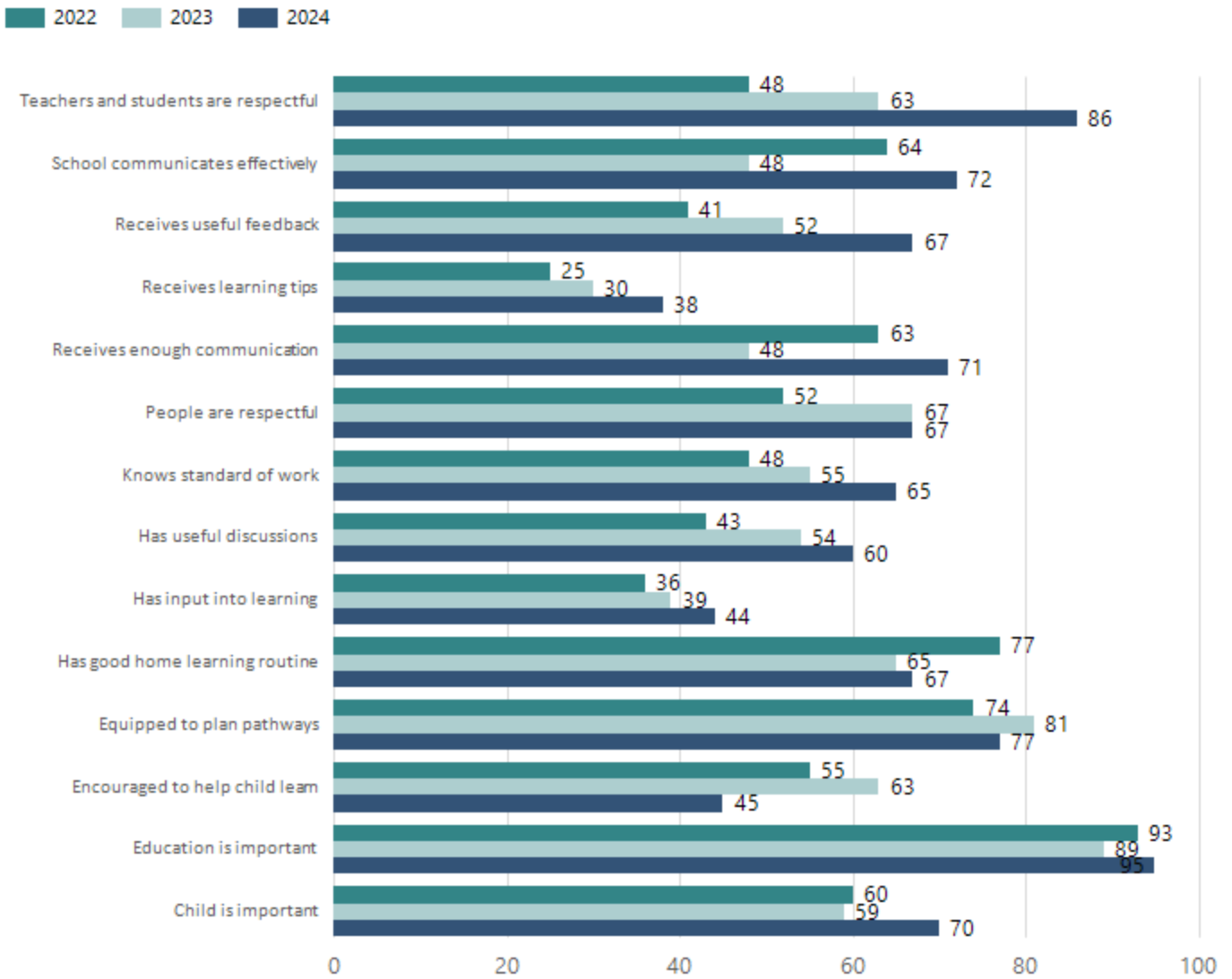
Data Source: Department for Education Attendance Data, Semester 1 Report 2024. A blank cell indicates there were no students enrolled. 'Primary Other' includes students enrolled in specialised education options. 'Secondary Other' includes students who have already spent a year at Year 12 and elected to undertake further study at Year 12.

Attendance Comment

In South Australia, all children and young people must be in school from 6 years to 16 years old. They must attend a government or non-government school full time. From age 16 to 17 however, young people must attend school or an approved learning program (such as an apprenticeship, traineeship, accredited course or university). Schools and parents must encourage and support students to come to school every day. Parents and caregivers must make sure their child is enrolled in a school, and attends school all day and everyday it is open, unless a child is sick or has an approved exemption. Teachers and leaders actively follow up when a student misses school, including recording all absences and non-attendance. All schools in South Australia have local attendance procedures governed under the Education and Children's Services Regulations 2020.

School Parent Opinion Survey Results

Proportion of agree/strongly agree response(%)



Data Source: 2024 Department for Education Parent Opinions Survey, Term 3 2024.

Intended Destination

Leave Reason	Number	%
IS - INTERSTATE	12	43.0%
NG - ATTENDING NON-GOV SCHOOL IN SA	6	21.0%
TG - TRANSFERRED TO SA GOVERNMENT SCHOOL	5	18.0%
U - UNKNOWN	5	18.0%

Data Source: Department for Education Destination Data Report, 2024. Data extract term 3 2024. Data shows recorded destinations for students that left the school in the previous year. Data is uploaded by schools in term 3 and may not reflect final or total figures at time of report creation.

Highest Qualifications held by the teaching workforce and workforce composition

All teachers at this school are qualified and registered with the SA Teachers Registration Board.

Qualification Level	Number of Qualifications
Bachelor's degrees or Diplomas	17
Postgraduate Qualifications	8

Data Source: Data extracted from Mandatory Workforce Information Collections as on the last pay date of June 2024. As self-reported by staff in the system.

Please note: Data includes staff who are Actively employed and on extended paid leave. Please note only the highest qualification of the Teaching staff is reported. Excludes any number of other certifications earned.

Workforce composition including indigenous staff

	Teaching Staff		Non-Teaching Staff	
	Indigenous	Non-Indigenous	Indigenous	Non-Indigenous
Full-Time Equivalents	0.0	23.6	0.4	13.2
Persons	0.0	25.0	1.0	20.0

Data Source: Data extracted from Mandatory Workforce Information Collection as on the last pay date of June 2024.

Please note: Data includes staff who are actively employed and on extended paid leave. "Indigenous category" is self-reported by staff in the system.

Financial Statement

Funding Source	Amount
Grants: State	4,763,042.04
Grants: Commonwealth	3800.00
Parent Contributions	91,726.90
Fund Raising	4653.40
Other	22,206.22

Data Source: School supplied data.